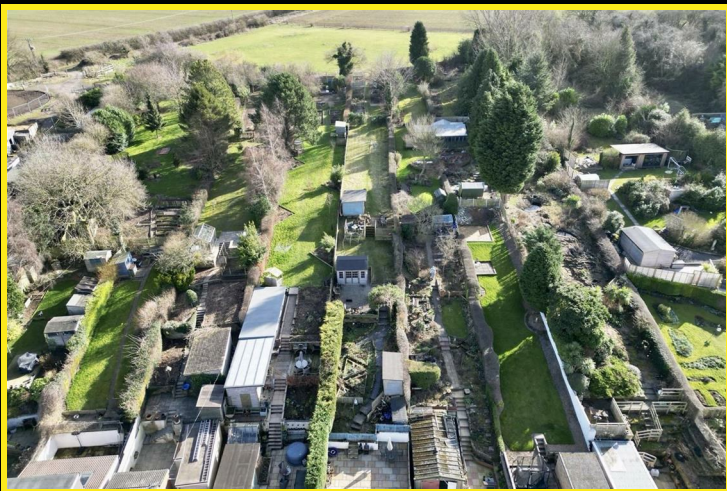


Mike
Dobson



30 Severn Drive
Garforth, Leeds, LS25 2BB

£340,000

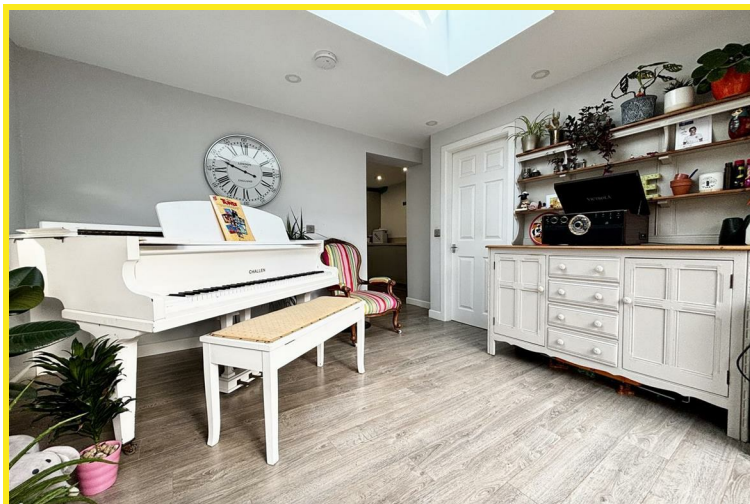
30 Severn Drive

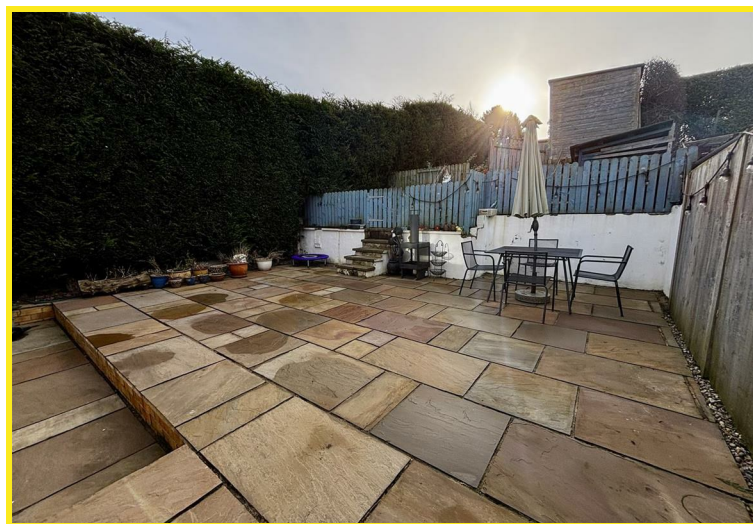
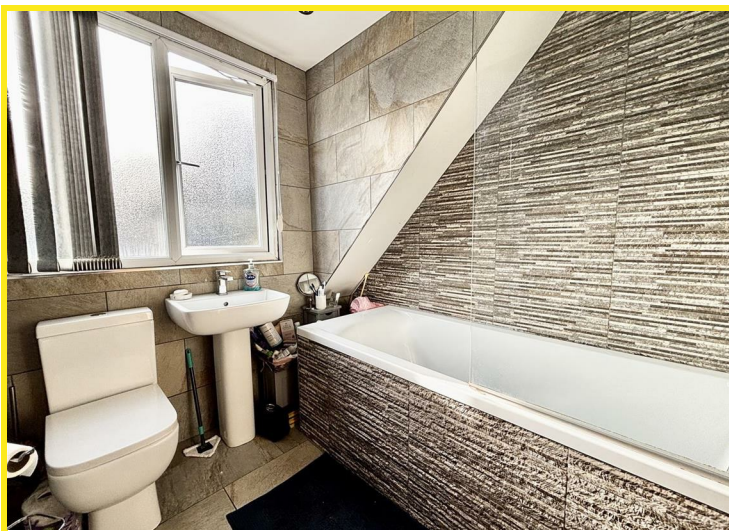
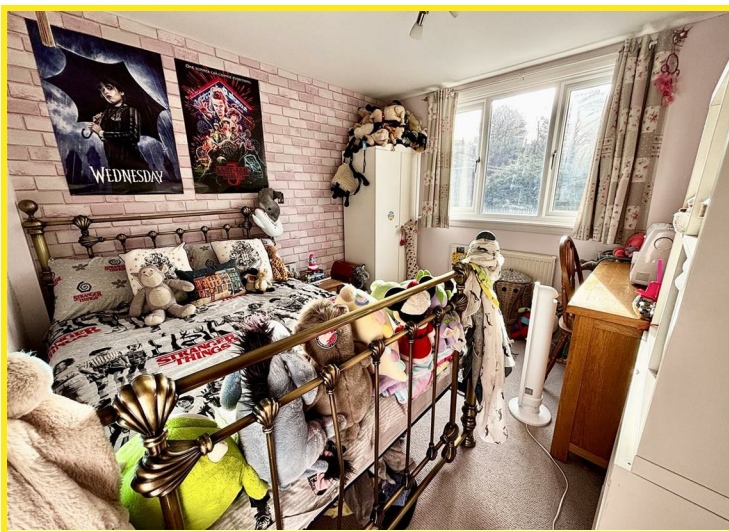
Nestled in the charming area of Garforth, Leeds, this extended three-bedroom semi-detached house on Severn Drive offers a delightful blend of modern living and outdoor enjoyment. Upon entering, you are welcomed into a spacious reception room that sets the tone for the rest of the home. The property boasts a re-fitted modern breakfast kitchen, complete with a range of integrated appliances and a generous island, making it the perfect space for culinary enthusiasts and family gatherings alike.

The accommodation includes three well-proportioned bedrooms, providing ample space for family or guests. The modern three-piece white bathroom suite adds a touch of elegance and convenience, while an additional utility/WC and playroom enhance the practicality of the home, catering to the needs of a busy household.

One of the standout features of this property is the extensive garden to the rear. This beautifully tiered outdoor space includes an Indian stone paved seating area, ideal for al fresco dining or simply enjoying the serene surroundings. The garden also features two charming summerhouses, a large lawned area, and further planting areas that overlook picturesque fields, creating a tranquil retreat right at your doorstep.

This semi-detached house is not just a home; it is a lifestyle choice, offering both comfort and a connection to nature. With its modern amenities and expansive outdoor space, it is an ideal setting for families or anyone seeking a peaceful yet vibrant community. Don't miss the opportunity to make this delightful property your own.

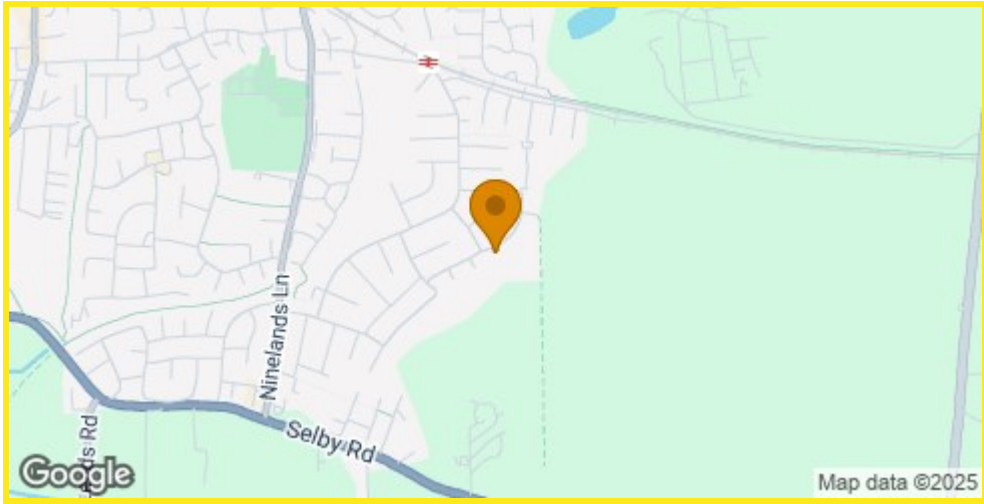




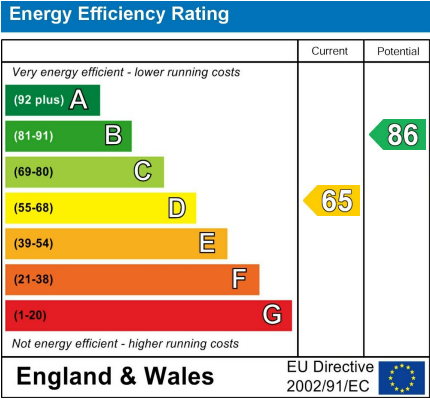
Floor Plan



Area Map



Energy Efficiency Graph



Directions